

MOTORLU PERGOLA SİSTEMLERİ

MOTORIZED PERGOLA SYSTEMS

Motorlu Pergola Sistemleri alüminyum taşıyıcılar üzerine uyarlanmış uzaktan kumanda ile açılıp & kapanabilen bir sistemdir. Şık ve estetik görüntüsü ile her mekana ve her projeye uygun bir şekilde tasarlanmıştır.

Dört mevsime uygun tasarımı ile yaz aylarında güneşli havalarda, kış aylarında ise yağmurlu veya karlı havalarda mekanlarınızda rahatlıkla kullanılabilir. Tavan kısmındaki alüminyum profiller üzerinde olan led ışıklar ile mekanlarınızı aydınlayabilirsiniz.

Motorized Pergola Systems are a system that can be opened and closed with a remote control adapted on aluminum carriers. With its stylish and aesthetic appearance, it is designed to suit every space and every project.

With its four-season design, it can be used in sunny weather in summer and in rainy or snowy weather in winter. You can easily use it in your spaces. You can illuminate your spaces with the led lights on the aluminum profiles on the ceiling.

TECHNICAL

MOTORIZED PERGOLA ALUMINUM PROFILES



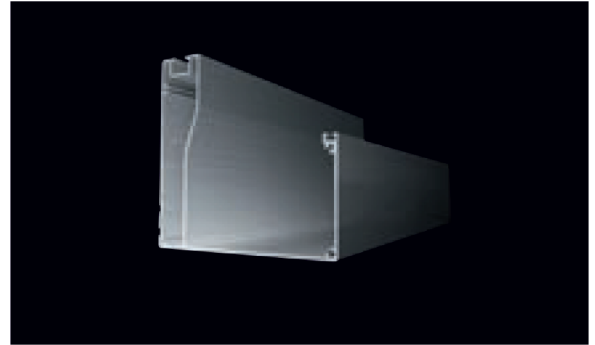
GOLD RAY PROFİLİ
Gold Ray Profile



SILVER RAY PROFİLİ
Silver Ray Profile



AYAK PROFİLİ
Foot Profile



OLUK PROFİLİ
Gutter Profile



KUMAŞ ALT PROFİLİ
Fabric Bottom Profile



KUMAŞ ALT PROFİLİ
Fabric Bottom Profile

MOTORIZED PERGOLA TECHNICAL SPECIFICATIONS

1- Pergola systems are manufactured at Idea Tente Guillotine Glass Systems facility in accordance with ISO9001 quality standards and the latest produced with technology. System design, aluminum construction and all accessories are our patented products.

2- The type of fabric used in our pergola products is PVC-based, 3-dimensional blackout membrane and imported SIOEN (Belgium) brand. Anti-bacterial walking roof cover is a blackout membrane weighing 850 gr/m² and has waterproof, non-combustible and non-flammable properties. Blackout membrane is covered with black film inside; It also provides heat insulation with its light-proof feature. It does not keep the heat in the summer and the cold in the winter. The fabric is guaranteed for 5 years.

3- The engine and automation components that run the pergola systems, all the components used in the specially designed engine block are our patented products. Motors are guaranteed for 5 years.

4- Pergola systems are a retractable roof cover (walking roof) system, consisting of horizontal axles, moving on vertical rails made entirely of aluminum parts.

5- Pergola systems are designed and produced in accordance with all weather conditions in 4 seasons.

6- Pergola systems are widely used as a winter garden, with their lateral parts closed with folding glass, sliding glass or aluminum joinery, and with its retractable roof feature.

7- There are no color restrictions on aluminum metal parts of pergola systems. It can be produced as electrostatic powder painted in all desired RAL colors, and all colors in the wood-like transformation processing chart can be obtained.

8- Pergola systems are resistant to 25 cm snow load and 70 km/h wind speed.

9- Stream profile specially designed for pergola systems; It ensures the controlled collection of the water spilled from the top cover, the water collected in the isolated environment thanks to the connection apparatus, proceeds to the ground through the strut profiles and is sent to the outside.

10- The walking roof rails of the pergola systems are special aluminum alloy extrusions, the interior is specially textured and includes the movement mechanism and walking axle wheels, no steel or wooden additional carrier is needed. It includes both the mechanism and acts as a carrier rail. It also has a stylish and aesthetic appearance with its designs.

11- All connection parts and bolts of pergola systems are stainless INOX.

TECHNICAL

MOTORIZED PERGOLA ALUMINUM PROFILES

